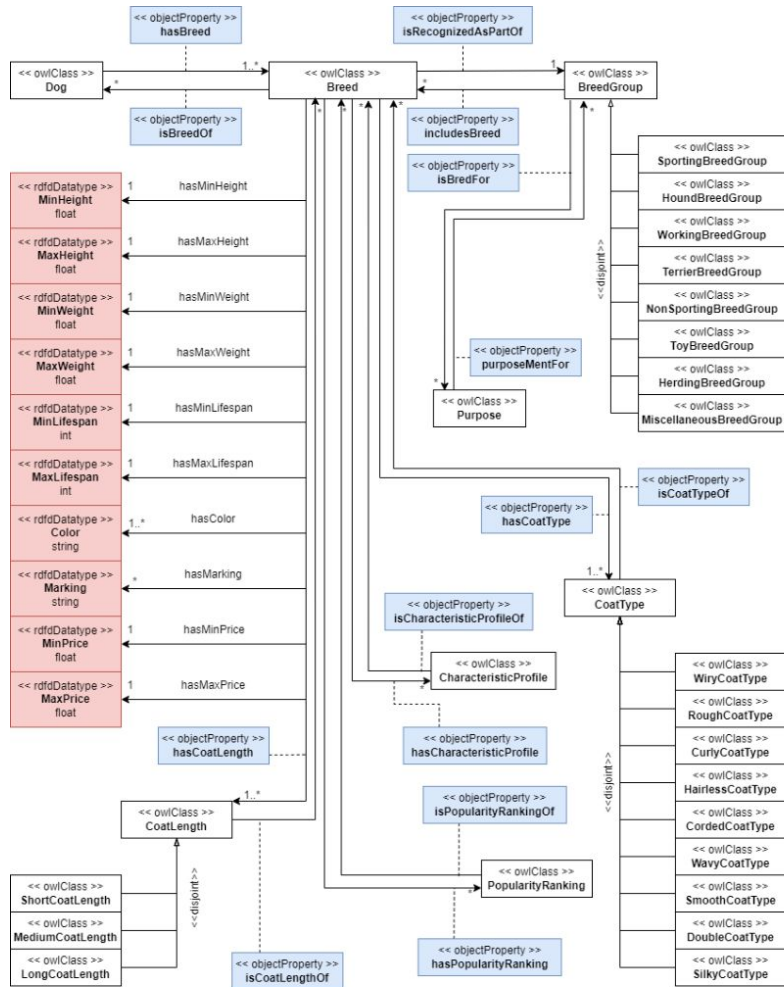


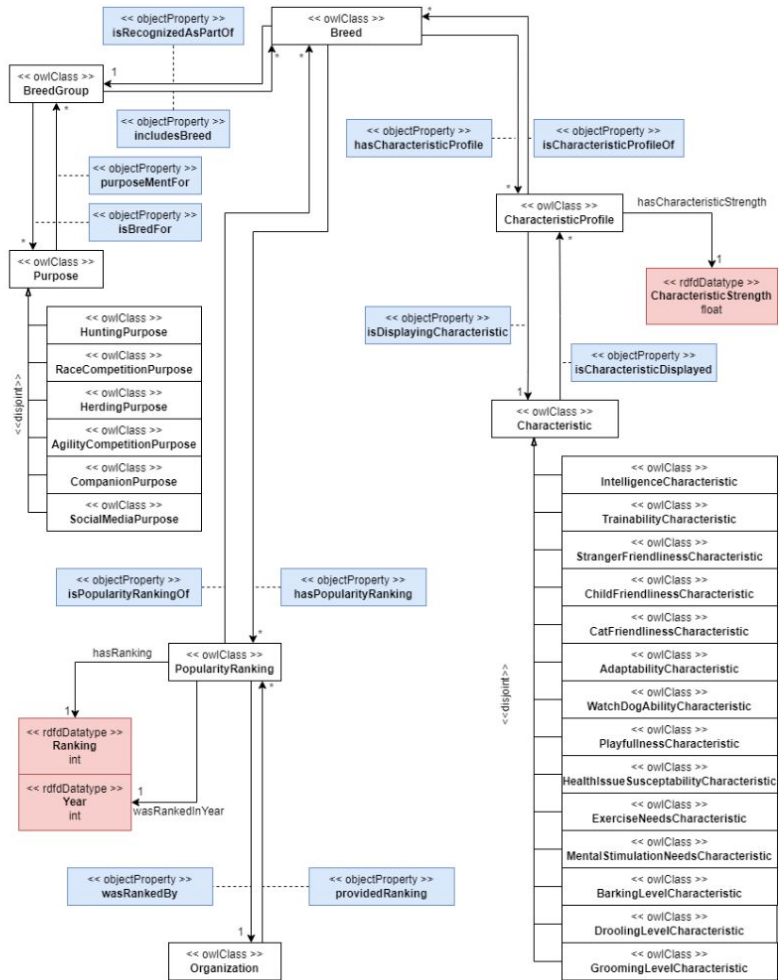
# Ontology Engineering

## Assignment 5, Conceptual Model

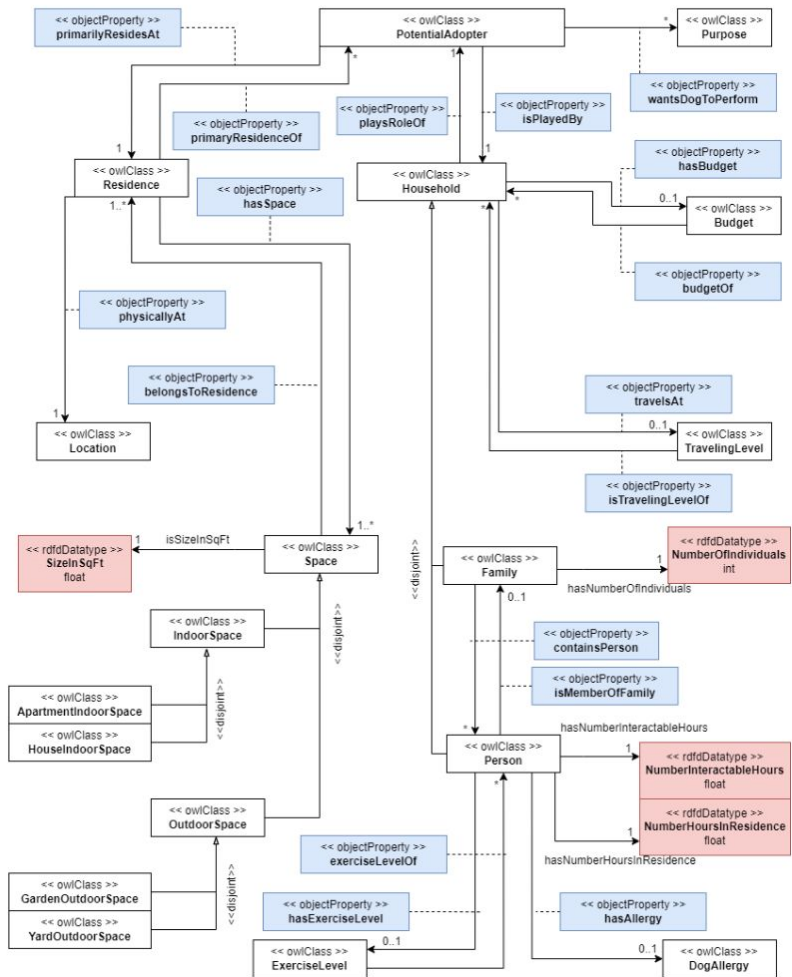
Ashley Choi, Debjani Ray-Majumder, Danielle Villa



This model shows how the high level classes surrounding dog breeds connect to each other in the dog breed ontology. Some concepts are broken down into subclasses, but more complex are not expanded in this model.

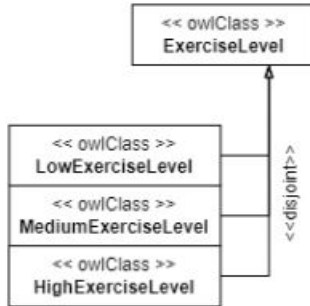
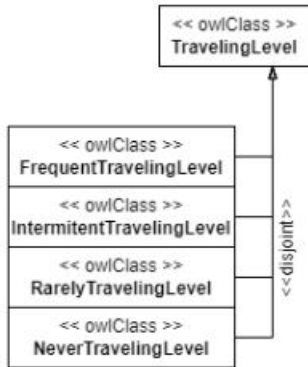
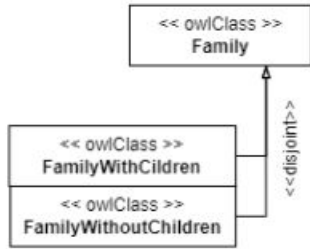
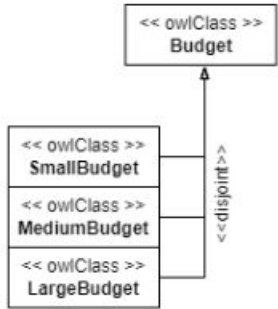


This model shows in detail how breeds are related to the purpose they're bred for, their popularity ranking, and their displayed characteristics. Those concepts are also broken down in this model.



This model shows how the high level classes surrounding potential adopters connect to each other in the dog breed ontology. The center of the model shows the relationship between potential adopters, households, families, and individuals. The rest of the model describes properties of those concepts.

The location class is imported from the FIBO Economic Indicators Ontology ([housing unit](#))



Additional subclasses for classes that appear in other models. All subclasses are disjoint.